

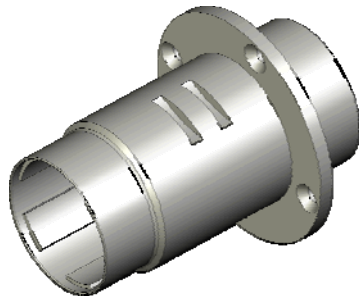
Introduction

Vantage explosionproof connectors are often mounted on mobile equipment and subject to extreme environments. Prior to coupling a plug to a receptacle, it is necessary to visually inspect the front face of the connectors to ensure they are free of contaminants that might obstruct a clean connection. In certain cases, it is recommended to perform a Mate Check Test before each connection. A Mate Check Receptacle replicates a complete mating cycle but without the unnecessary burden of engaging the coupling threads.

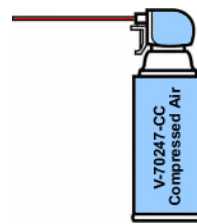
Applicable Vantage Products

AF/SF Series control connectors for plugs with insert VT-16-621PN00.

Identification of Kit Contents



V-70247-PW-FXT
Mate Check Receptacle



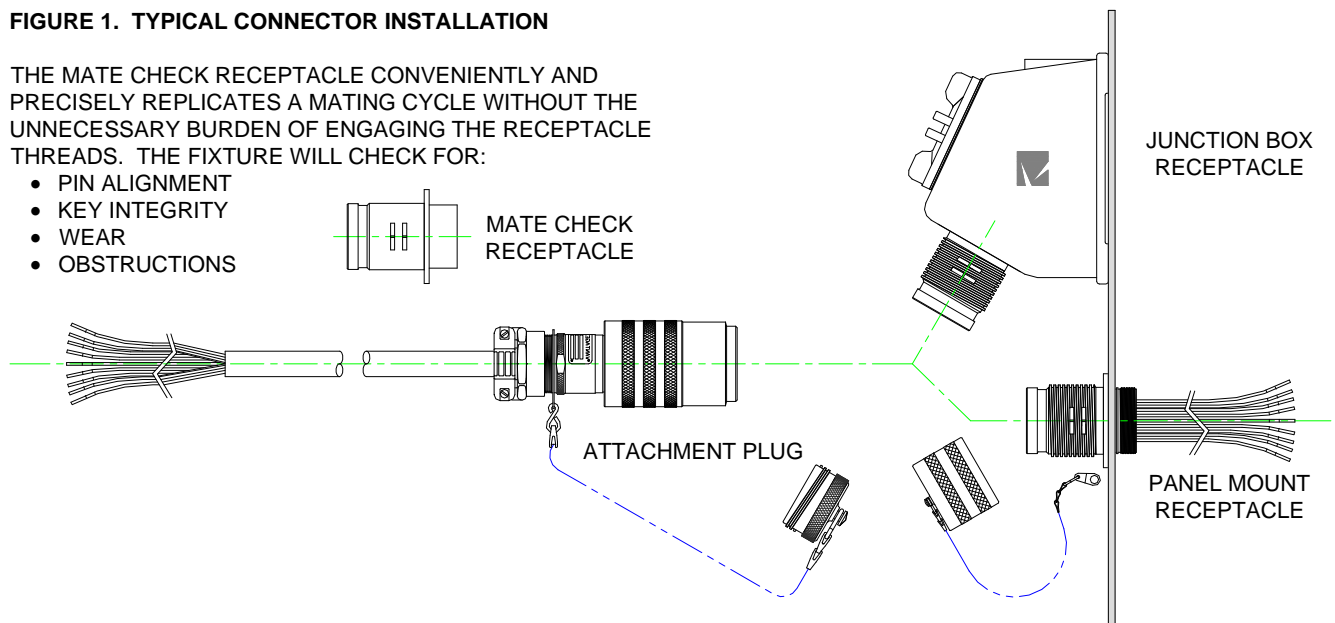
V-70247-CC
Compressed Air

Application

FIGURE 1. TYPICAL CONNECTOR INSTALLATION

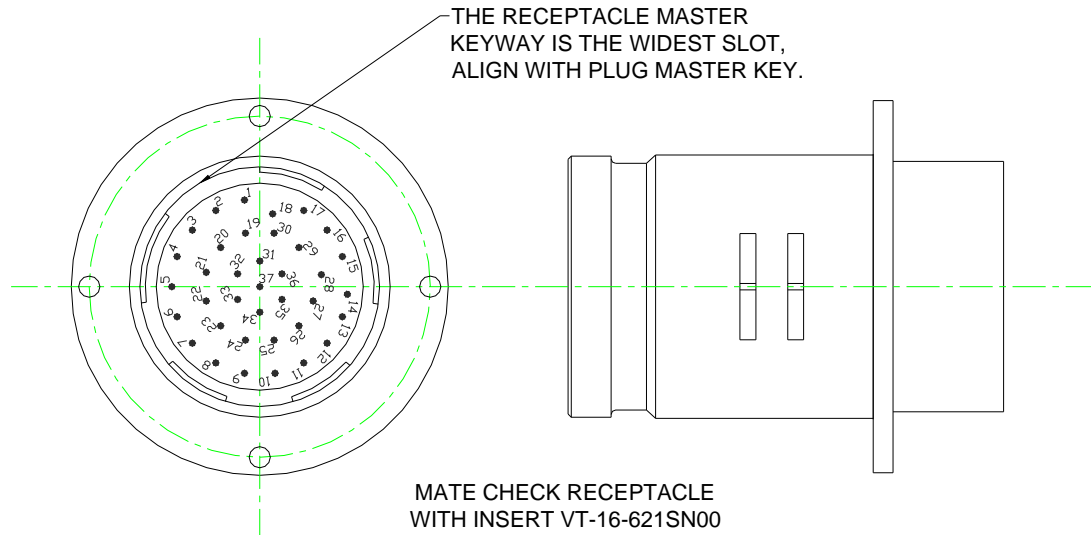
THE MATE CHECK RECEPTACLE CONVENIENTLY AND PRECISELY REPLICATES A MATING CYCLE WITHOUT THE UNNECESSARY BURDEN OF ENGAGING THE RECEPTACLE THREADS. THE FIXTURE WILL CHECK FOR:

- PIN ALIGNMENT
- KEY INTEGRITY
- WEAR
- OBSTRUCTIONS



Mate Check Receptacle

FIGURE 2. MATE CHECK RECEPTACLE
V-70247-PW-FXT



Mate Check Procedure

1. **Caution:** Disconnect supply circuits prior to any maintenance or inspection steps.
2. Before inserting V-70247-PM-FXT, Mate Check Receptacle, into plug, ensure plug face is free of any debris. Use V-70247-CC, Compressed Air, to dislodge any loose particles or obstructions.
3. Rotate Mate Check Receptacle to align metal keyways with plug keys and insert Mate Check Receptacle into plug. See Figure 3. A gentle rocking motion may be required but no mechanical assistance is necessary. The need for excessive force indicates contamination or damage.
4. Remove Mate Check Receptacle from plug and visually inspect the front face of the plug. Look for soiled, bent, or pushed-back contacts. Likewise, check the Mate Check Receptacle for wear or damage.
5. If there are bent contacts and/or contacts that have been pushed back, REMOVE plug from service. Further inspection of the plug is needed.
6. If problem persists, consult Vantage Technology.

FIGURE 3. MATE CHECK PROCEDURE

1. CHECK PLUG FOR DEBRIS AND IMPERFECTIONS.
2. FIND AND ALIGN MASTER KEYWAY TO KEY.
3. GENTLY PUSH RECEPTACLE ONTO PLUG.
4. IF UNDUE MATING FORCE IS REQUIRED, INSPECT PLUG.

